

# Draftsman®

# CuttingShop™



**ABOVE:**  
The original  
bitmap image is  
imported.

**RIGHT:**  
The picture is vec-  
torized; long lines  
and arcs are shown  
with end points.

**BELOW:**  
The finished vectors  
are exported and

## SCAN and CUT

Draftsman's Cutting Shop is the premier 32 bit raster-to-vector conversion program for all cutting applications. It is simple to install, easy to use and extremely fast. The program imports color, gray and black and white images. Scans of both sketches and silhouettes are quickly converted into high quality, ready to cut, vector drawings.

Any TrueType font is instantly outlined with long lines and arcs. Whether they comprise a vectorized drawing or an outlined font, complex curves are made of a series of end to end arcs, and outlines are closed polygons. Images converted with Cutting Shop cut smooth and the cutting tool stays down until the outline is finished, optimizing your cutting operation.

**PREPARATION** - Cutting Shop has many features designed specifically for NC applications, such as *line offset*, *cuttable fills*, *automatic and manual tool path sorting*, *show direction of cut and*, if required, *reverse it*. Also, you can import DXF files from low-end raster-to-vector programs and automatically create long lines and arcs from the thousands of short vectors that these programs can create.

**EDIT** - Because Cutting Shop is a hybrid raster/vector program and because clean-up is always a concern, Cutting Shop comes with an impressive variety of vector and raster editing functions; stretch, scale, move, copy, delete, insert and join - about 40 of these tools are available.

**EXPORT** - Vectors are exported to DXF, PLT, IGES and other CAD and CAM-specific formats. Vectors, raster, or the combined raster and vector hybrid image can be saved or printed. Vectors can be drawn on the raster image and the combined raster/vector drawing can be saved back as a raster drawing.

### RASTER TO VECTOR CONVERSION

- Convert All or Selection to Vectors
- Color and Gray Support
- Silhouette Conversion
- Sketch Conversion
- Preset and User Defineable Conversion Parameters
- Long Lines and Arcs

### FONTS

- Silhouette any TrueType font
- Type on an Arc or Series of Arcs

### NC PREPARATION

- S-Fill, Hatch Fill
- Bridge Tool
- Automatic Tool Path Optimization
- Manual Tool Path Sort
- Change Direction of Cut

### HEADS-UP DIGITIZING

- Snap to Raster
- Snap to Vector
- Raster Editing
- Vector to Raster Conversion
- Trace with Lines, Circles, Arcs, Text and Polygons

### RASTER EDITING

- Vector to Raster Conversion
- Box and Polygon Erase
- Pixel Editing
- Hole Filling
- Raster Grid
- Despeckle
- Copy

### RASTER FILES IMPORTED/EXPORTED

- PCX
- BMP
- Tif Group 4
- Tif Uncompressed
- Tif Pack Bits
- RLC
- CALS Group 4

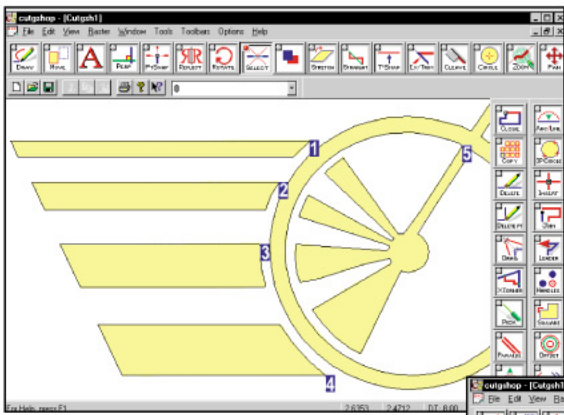
### VECTOR FILES EXPORTED

- DXF
- PLT
- IGES
- DXB
- CGM
- HPG
- TXT
- 2D

### PRINTING

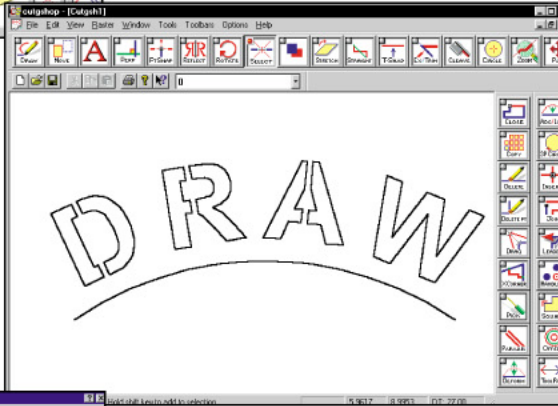
- Raster, Vector and Hybrid Printing

NOTE: DRAFTSMAN® and CUTTING SHOP™ are trademarks of Arbor Image Corporation

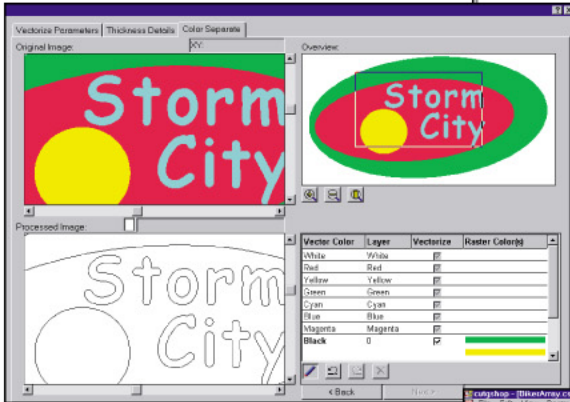


**Converted vectors**, in black, overlay the raster image, in yellow; the user manually modifies the tool path cutting order of the objects.

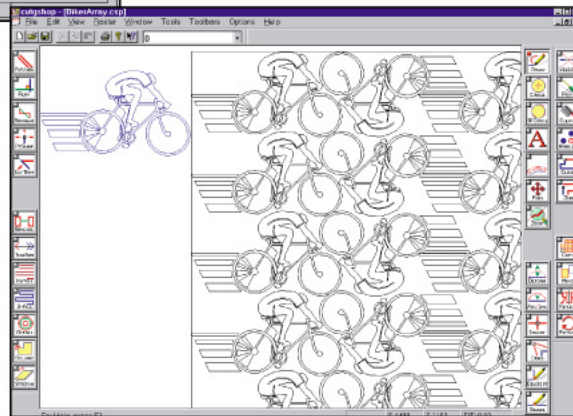
**True Type Fonts** may be placed on an arc and are automatically outlined in ultimate precision. Bridges may be inserted so that inner areas are connected to the exterior areas.



**Color, gray and black & white images** are quickly converted to vectors.



**Simple nesting (optional)** quickly fills your work space with copies of parts to be cut out of a single sheet of material.



## Applications

- Laser Cutting
- Engraving
- Routing
- Wire EDM
- Milling
- Vinyl Cutters
- Mold Making
- Mat Cutters
- Plasma
- Dies
- Flame and Other Cutting Machines.

## Products ideal for Cutting Shop include:

- Jewelry
- Vinyl & Wood Signs
- Stencils
- P.O.P. Displays
- Tooling
- Stained Glass
- Cabinets
- Film Industry Props
- Molds
- Picture Frame Mats
- Toys
- Clothing Dies
- Furniture
- Wrought Iron Gates
- Badges
- Rubber Floor Mats
- Gaskets
- Steel Rule Dies
- Packaging
- Automotive Mirrors
- Monuments
- Quilt Patterns
- Router Bits
- Decorative Mirrors
- Gun Parts
- Custom Knives
- Trophies
- Crafts - Silhouettes
- Toys
- Airplane Models
- Gun Stocks
- Picture Frames
- Hand Axes
- Technical Manuals
- Holiday Ornaments
- Plastic and Metal Machine Parts
- Promotional Products such as Key Chains and Money Clips

## SUGGESTED RETAIL PRICING

Cutting Shop is priced to suit your requirements: the two models PF and LF are the same except for the size of the image each will process. The indicated sizes are for scans up to 300 DPI.

### REQUIREMENT(S)

Windows 95, 98 or NT Minimum 32Mb

PROGRAM	MODEL	DESCRIPTION	SUGGESTED RETAIL
Cutting Shop	LF	Supports scans up to 100" x 100"	\$ 2,495.00
	PF	Supports scans up to 11" wide	\$ 1,195.00
Option	Simple Nesting		\$ 395.00

*Product names are trademarks, or registered trademarks, of their respective corporations*

This brochure can be printed on any high quality color printer. Dealer contact information can be added to the bottom of page one.